

## WORD CLOUDS



Figure S1: Word clouds for each country and sector of public administration.

ACTIVITY ANALYSIS

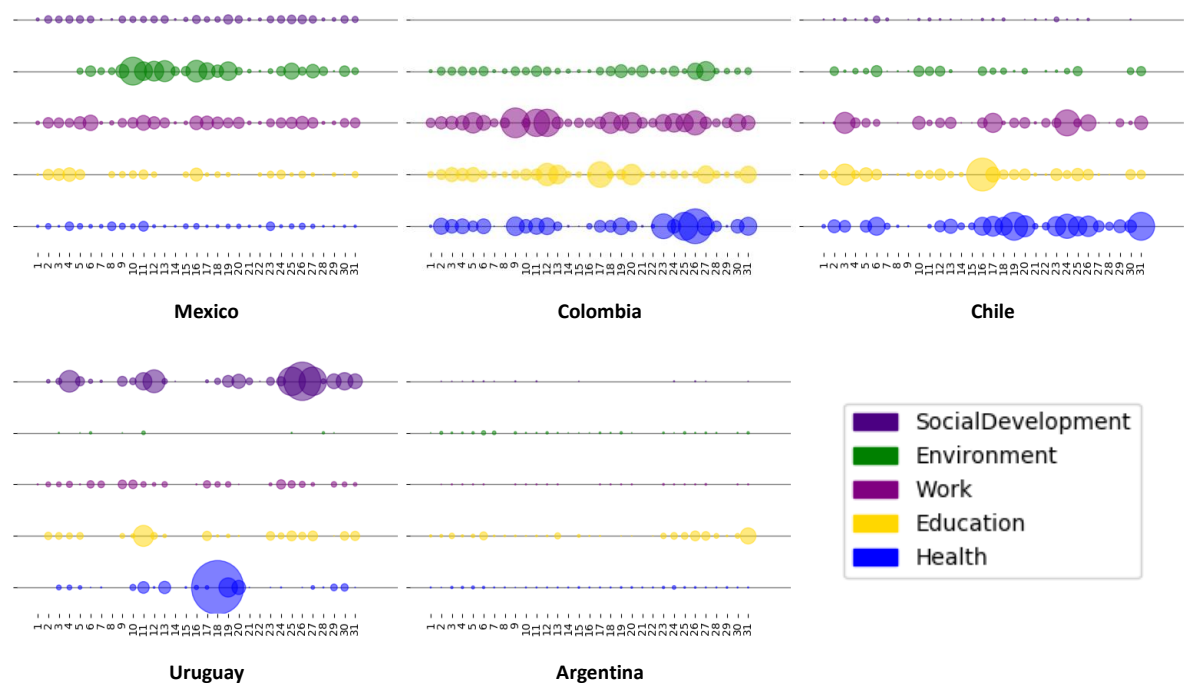


Figure S2: Activity level of each country in each sector of public administration during October 2017.

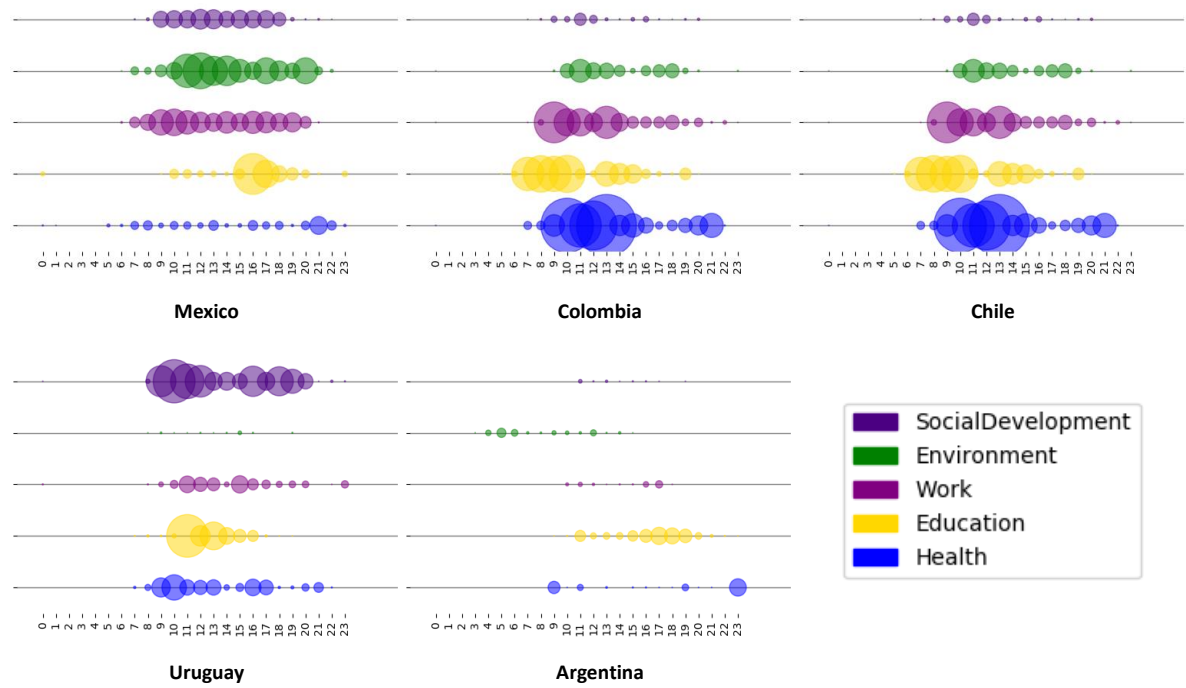


Figure S3: Activity level per hour of each country in each sector of public administration during October 2017.

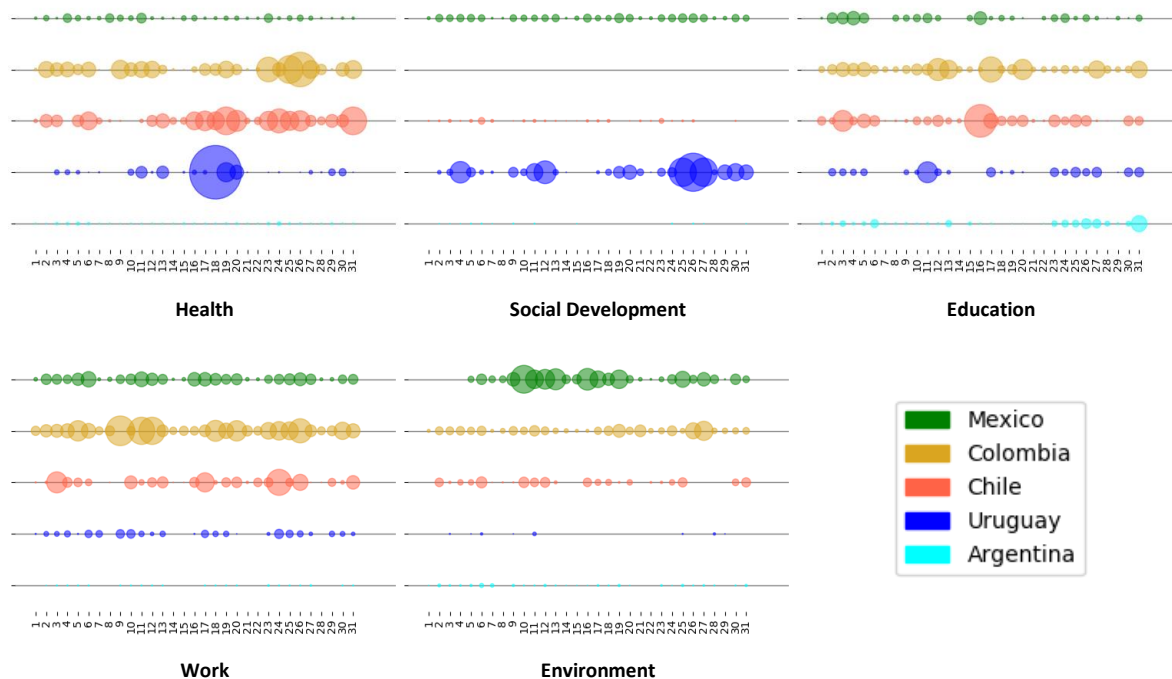


Figure S4: Activity level of each sector of public administration in each country during October 2017.

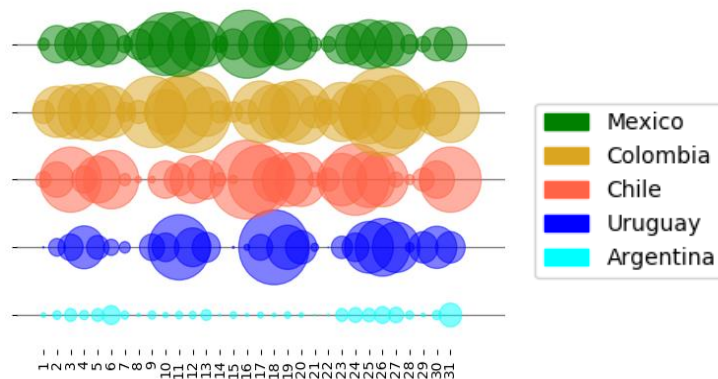


Figure S5: Activity level of each analyzed country during October 2017 (grouping all sectors).

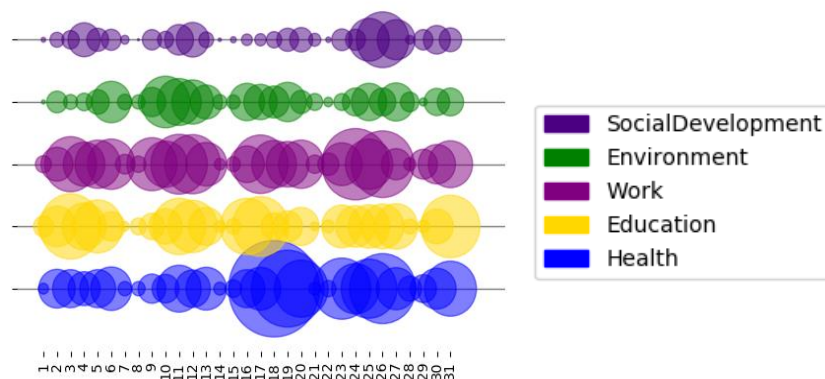


Figure S6: Activity level of each sector of public administration during October 2017 (grouping all the analyzed countries).

ANALYSIS OF RESOURCE SHARING

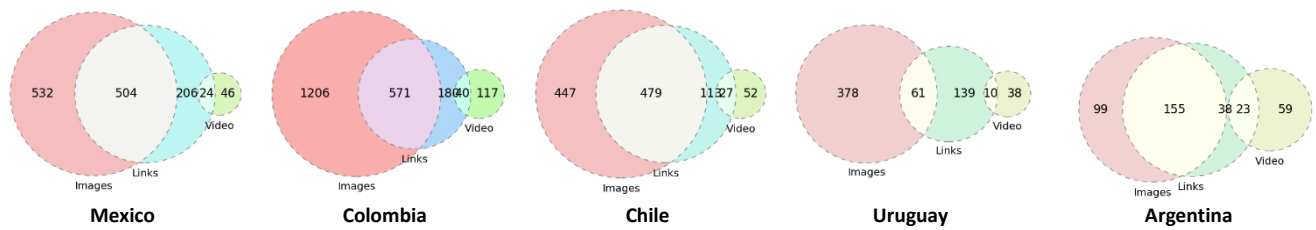


Figure S7: Colored Euler diagrams representing the number of links, images and videos shared by each country (grouping all sectors).

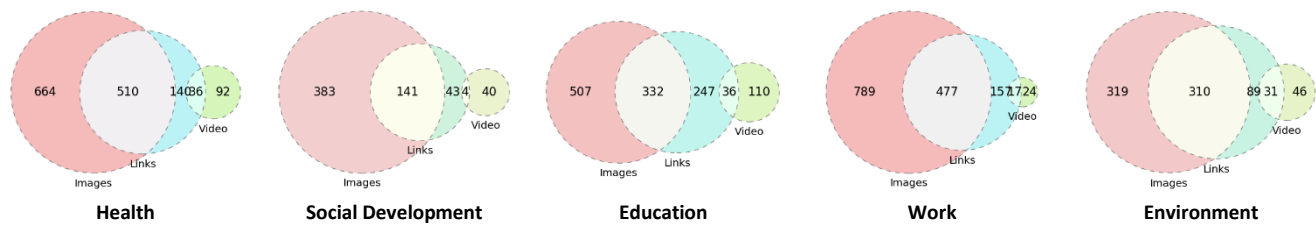


Figure S8: Colored Euler diagrams representing the number of links, images and videos shared by each public administration sector (grouping all the analyzed countries).



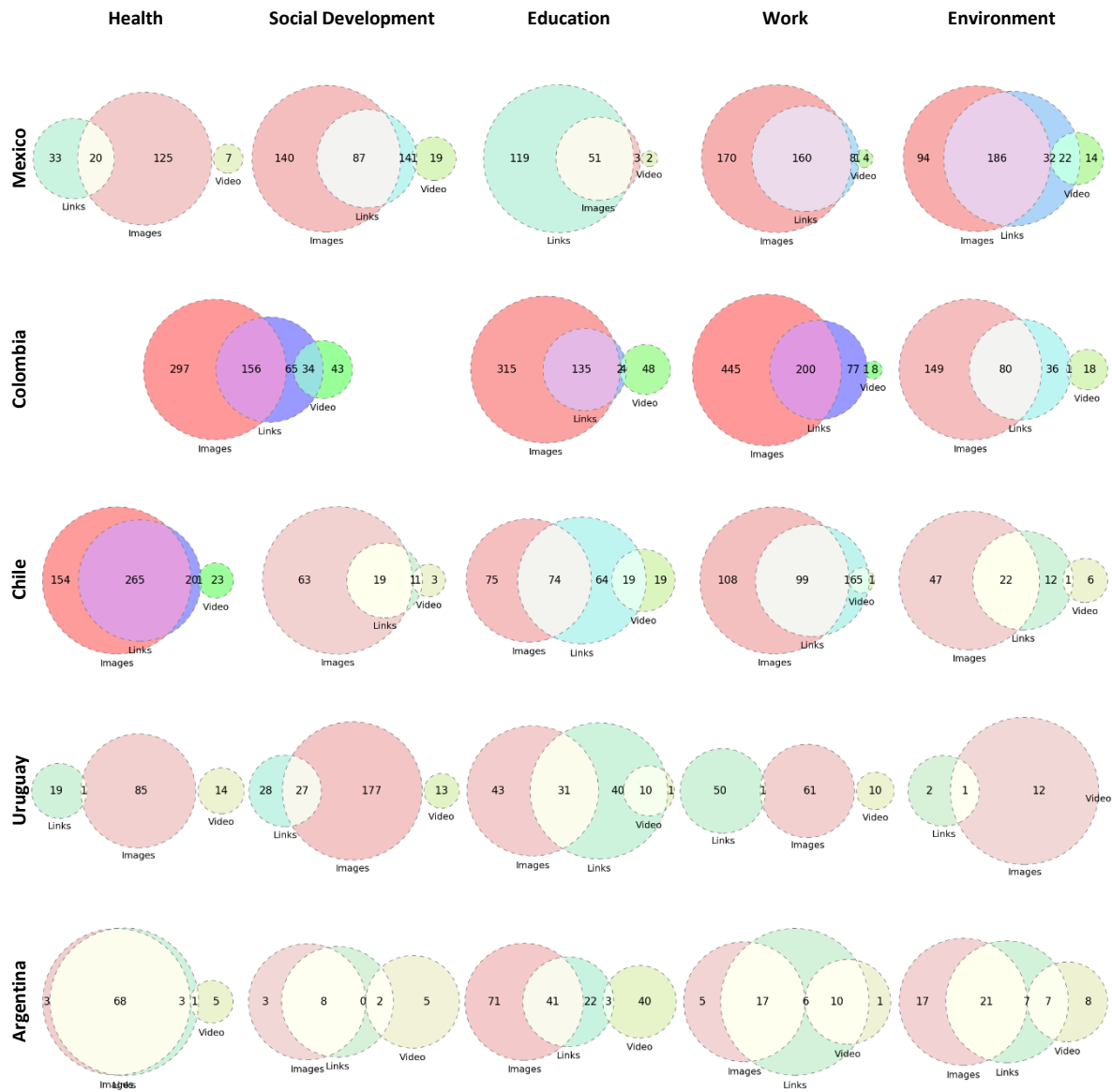


Figure S9: Colored Euler diagrams representing the number of links, images and videos shared by each country and each public administration sector.

ANALYSIS OF CITIZEN INTERACTION

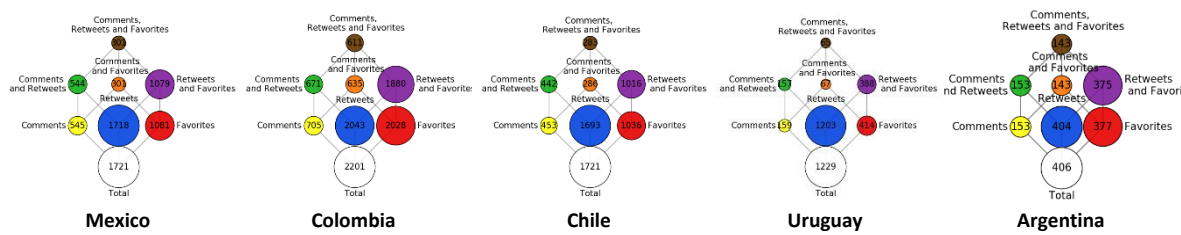


Figure S10: Colored extended Hasse diagrams representing the degree of citizen response based on comments, retweets and favorites in each country (grouping all sectors).

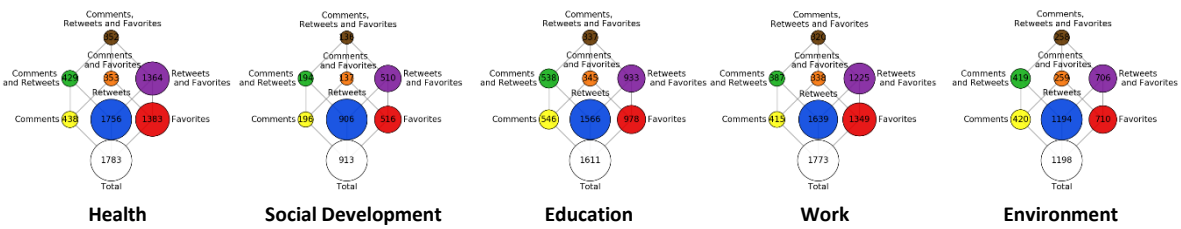


Figure S11: Colored extended Hasse diagrams representing the degree of citizen response based on comments, retweets and favorites for each public administration sector (grouping all the analyzed countries).

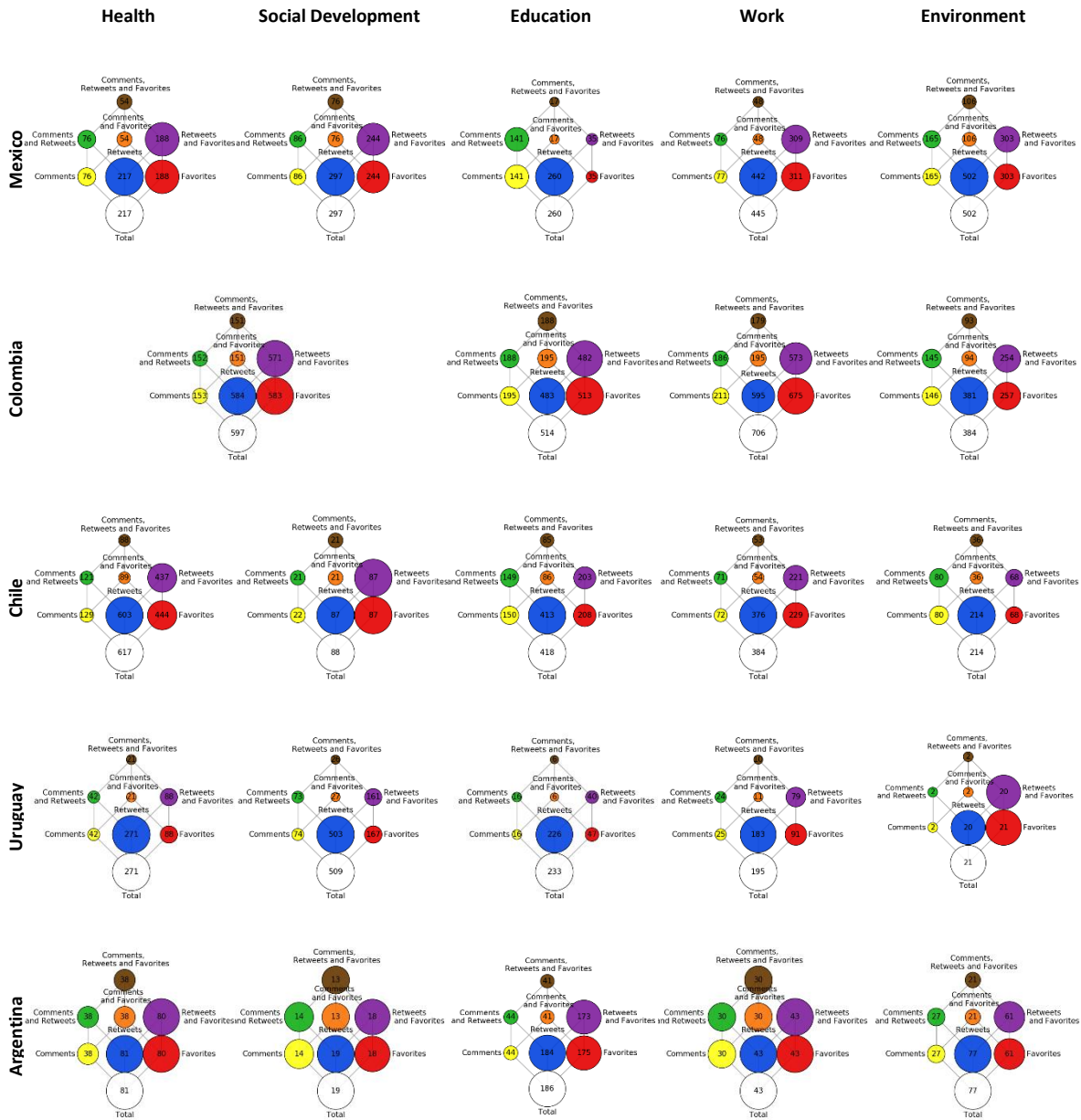


Figure 12: Colored extended Hasse diagrams representing the degree of citizen response based on comments, retweets and favorites for each country and each public administration sector.

## SENTIMENT ANALYSIS

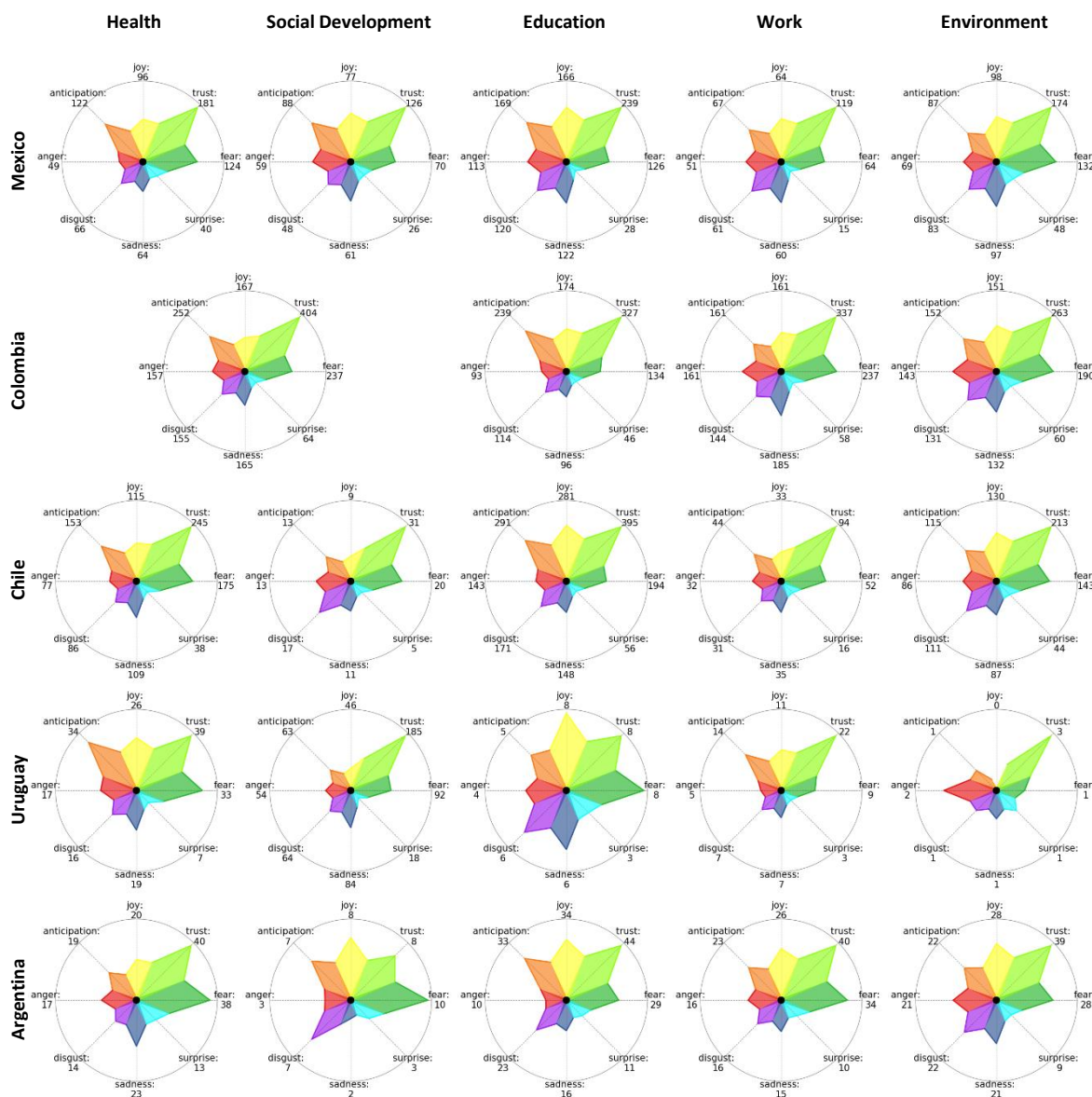


Figure S13: Sentiment analysis on citizen comments in response to the announcements made by each public administration sector in each country.



Figure S14: Sentiment analysis on citizen comments in response to the announcements made by each country grouping all public administration sectors.

## CORRELATIONS LINE CHARTS

### Resources shared and Citizen interaction -- Countries

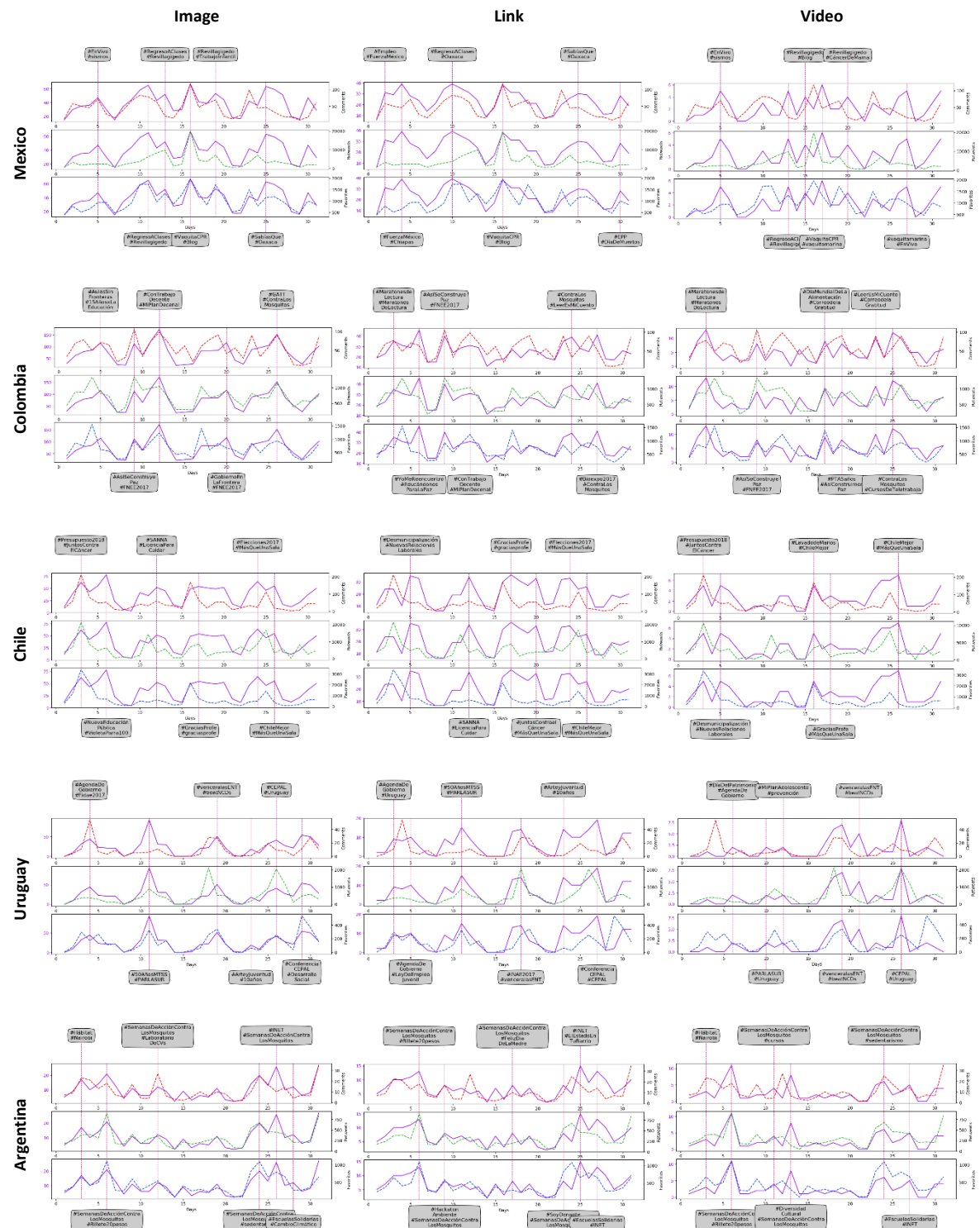


Figure S15: Annotated line charts showing correlation between images, videos and links shared by each government and citizens comments, retweets and favorites.



## Resources shared and Citizen interaction -- Mexico

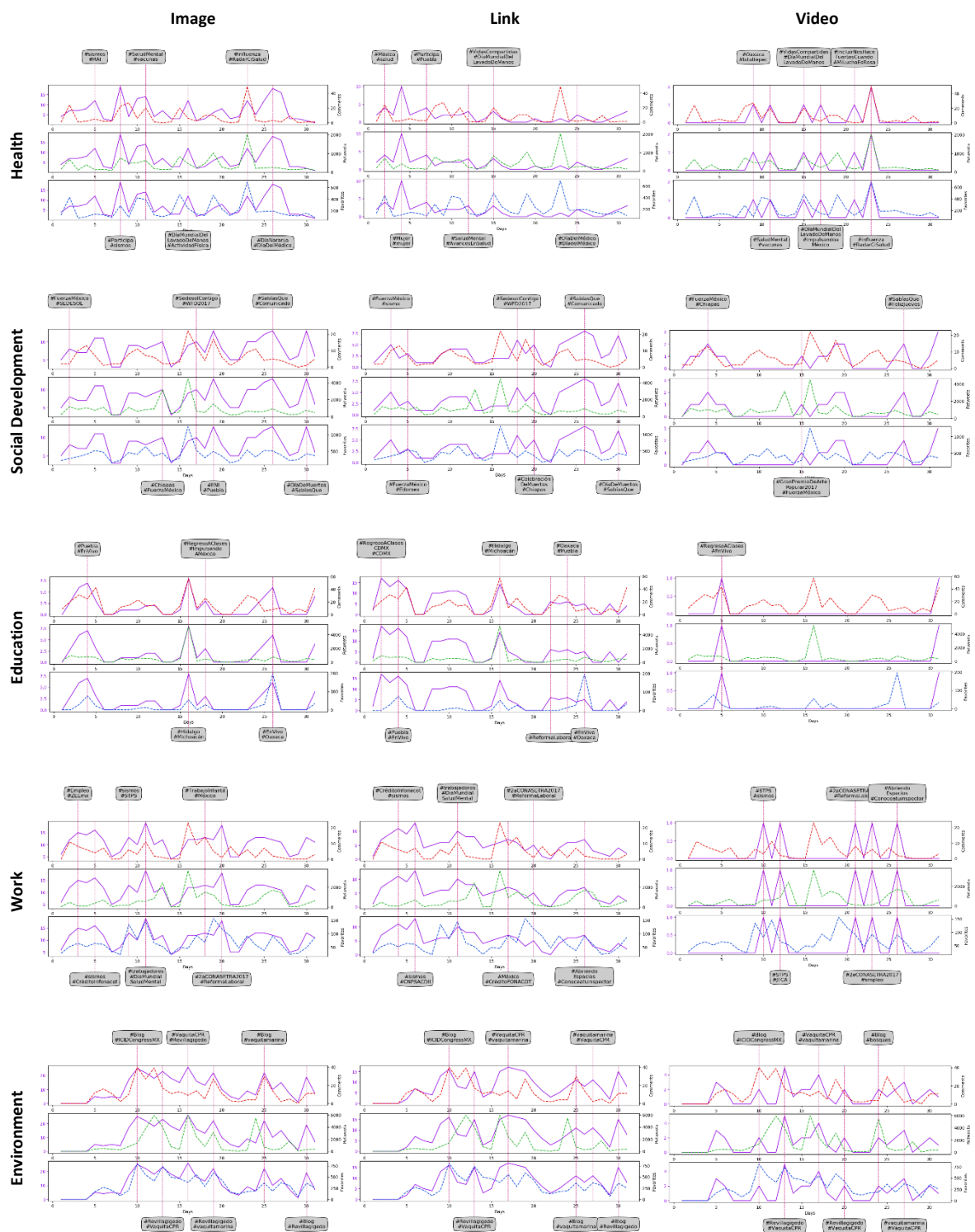


Figure S16: Annotated line charts showing correlation between images, videos and links shared by each ministry of Mexico and citizens comments, retweets and favorites.

Figure 1 displays the temporal evolution of COVID-19 cases across four domains (Health, Education, Work, Environment) and three regions (Image, Link, Video). Each chart shows three metrics: Cases (red line), Recoveries (green line), and Deaths (blue line) over a 30-day period. Vertical pink lines indicate specific dates. The charts are organized into a 4x3 grid, with each row representing a domain and each column representing a region. The y-axis for each chart is labeled with the metric name and its scale. The x-axis is labeled 'Days' and ranges from 0 to 30. The charts show varying trends across domains and regions, with some regions showing more pronounced peaks and troughs than others.

## Resources shared and Citizen interaction -- Chile

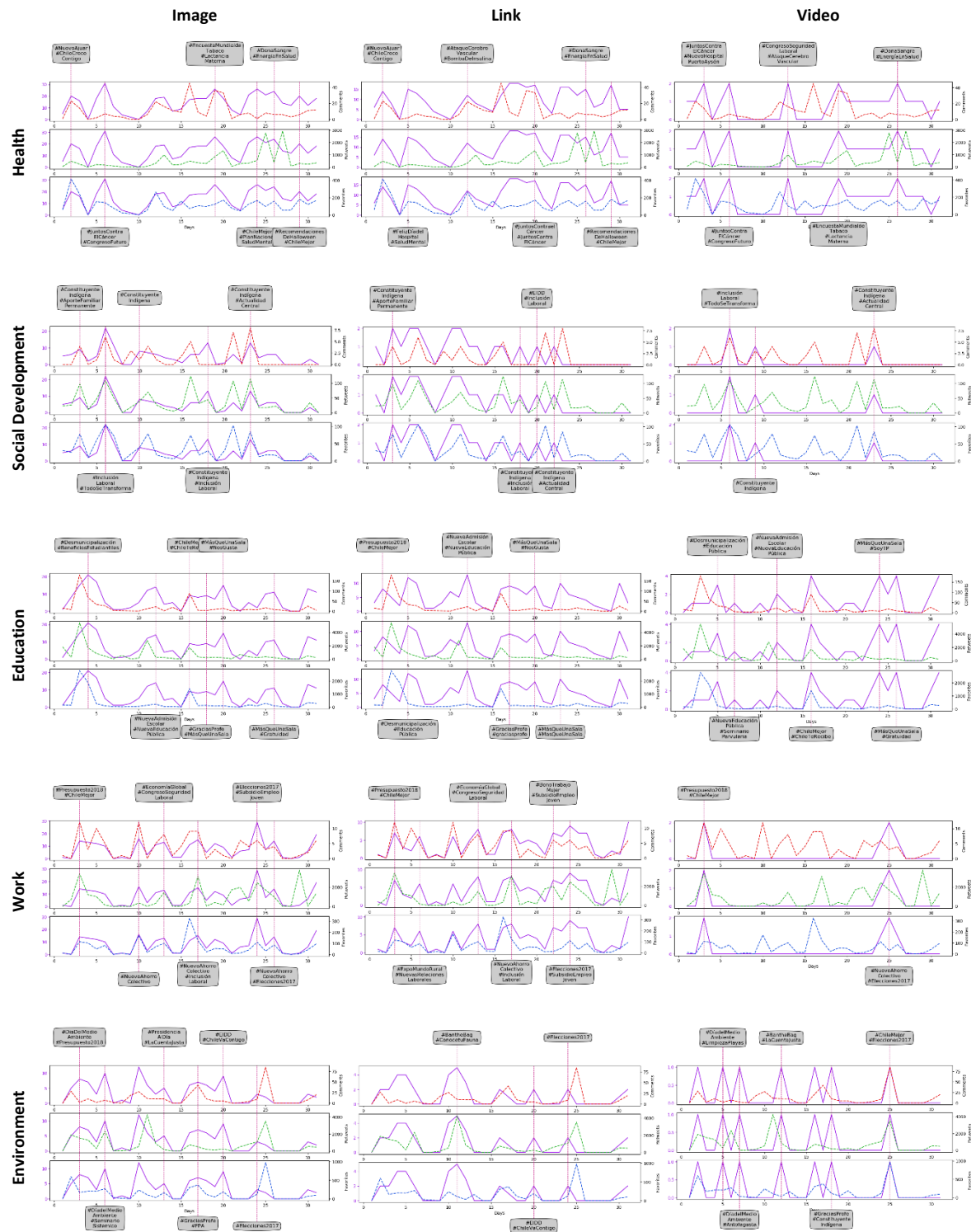


Figure S18: Annotated line charts showing correlation between images, videos and links shared by each ministry of Chile and citizens comments, retweets and favorites.

## Resources shared and Citizen interaction -- Uruguay

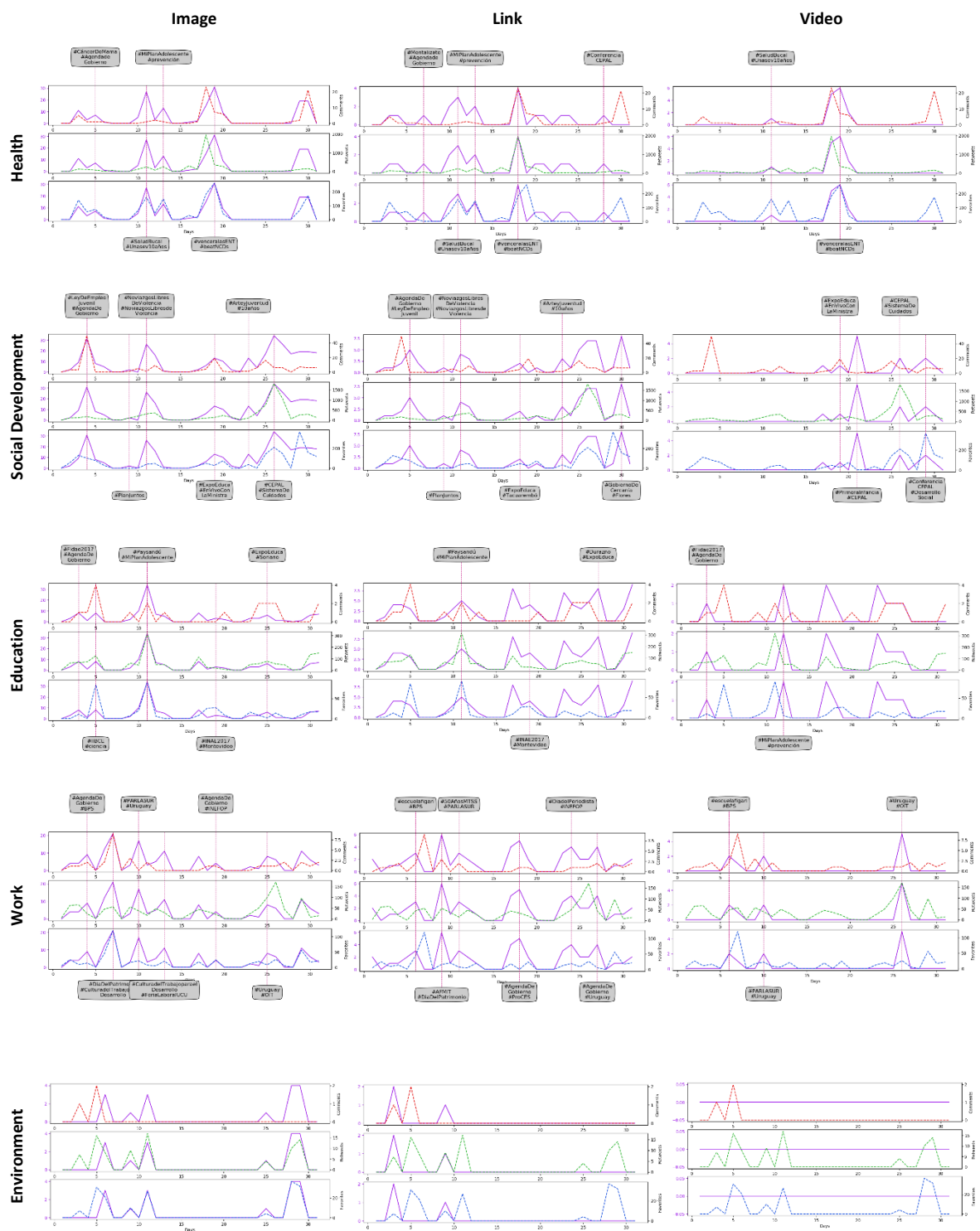


Figure S19: Annotated line charts showing correlation between images, videos and links shared by each ministry of Uruguay and citizens comments, retweets and favorites.

## Resources shared and Citizen interaction -- Argentina

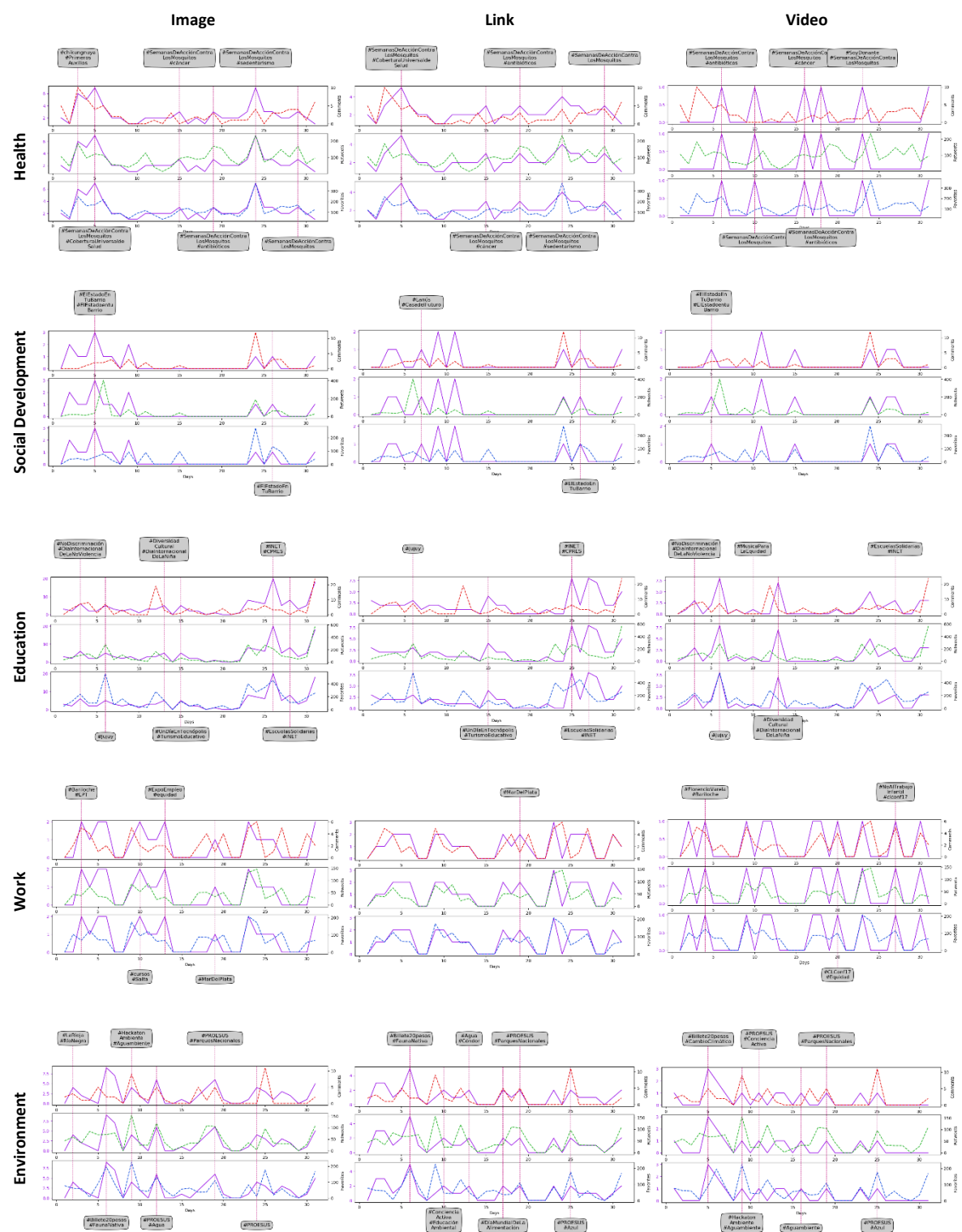


Figure S20: Annotated line charts showing correlation between images, videos and links shared by each ministry of Argentina and citizens comments, retweets and favorites.



## Official announcements and Citizen interaction -- Mexico

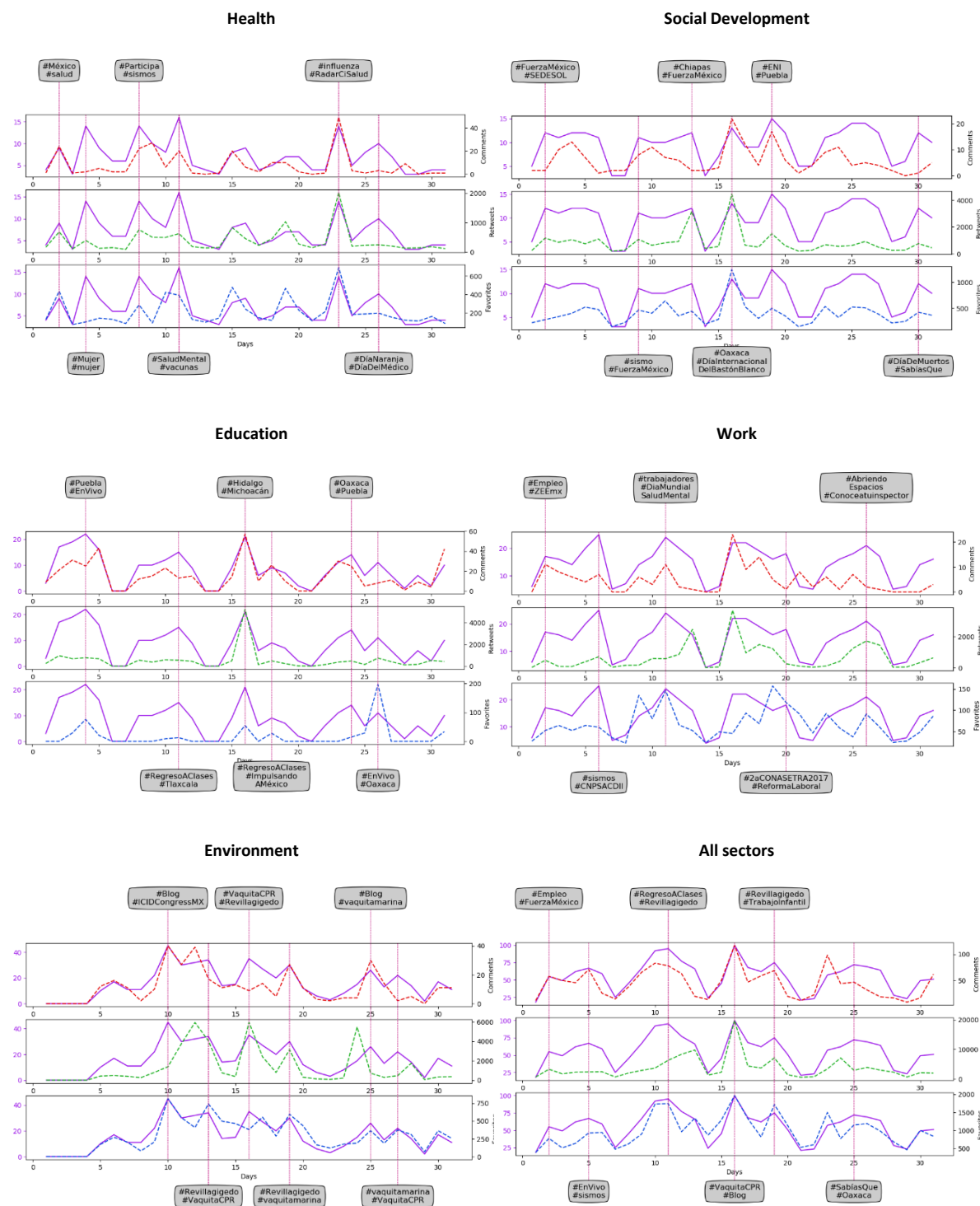


Figure S21: Annotated line charts showing correlation between announcements in Mexico made in each sector and citizens comments, retweets and favorites.

## Official announcements and Citizen interaction -- Colombia

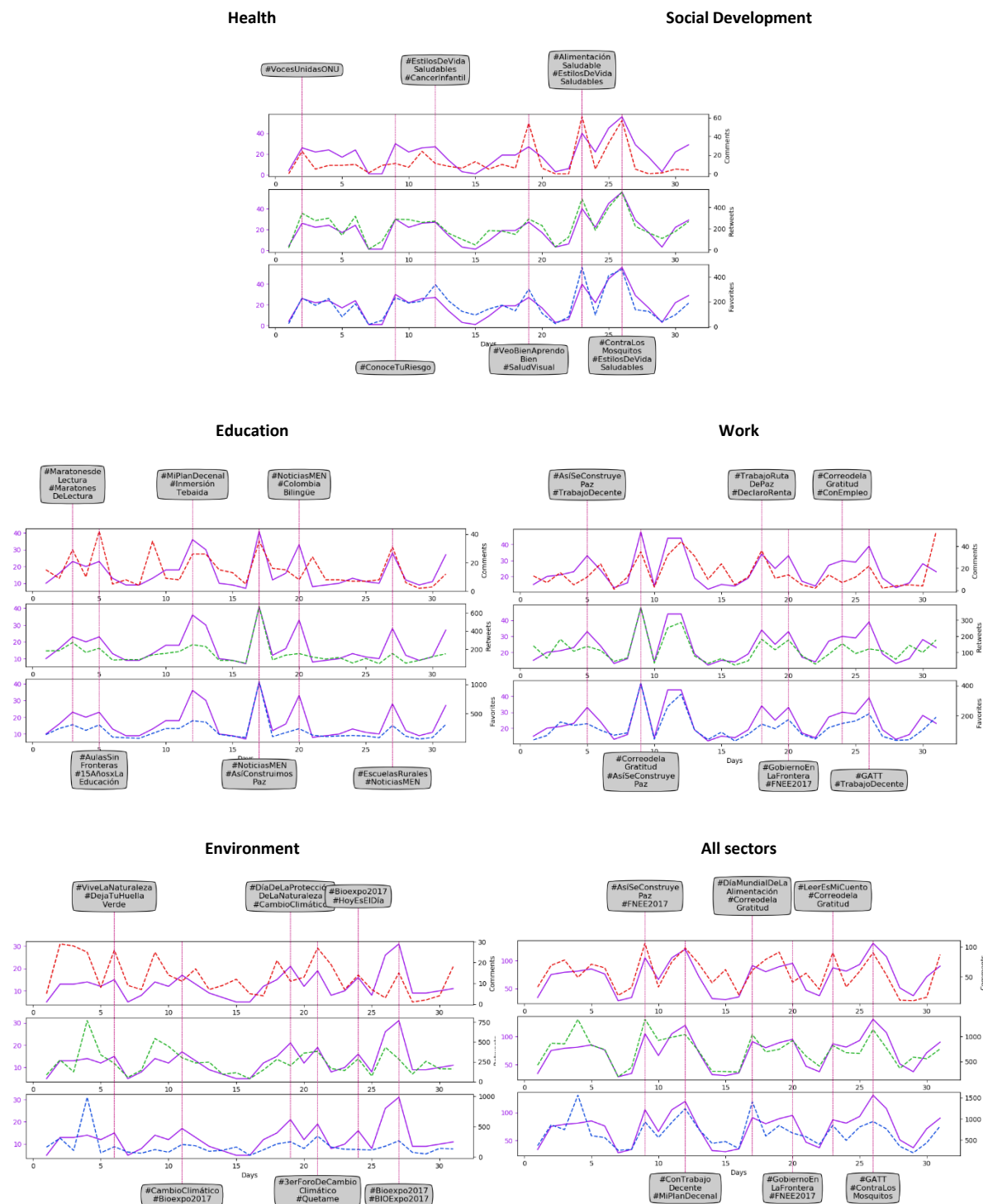


Figure S22: Annotated line charts showing correlation between announcements in Colombia made in each sector and citizens comments, retweets and favorites.

## Official announcements and Citizen interaction – Chile

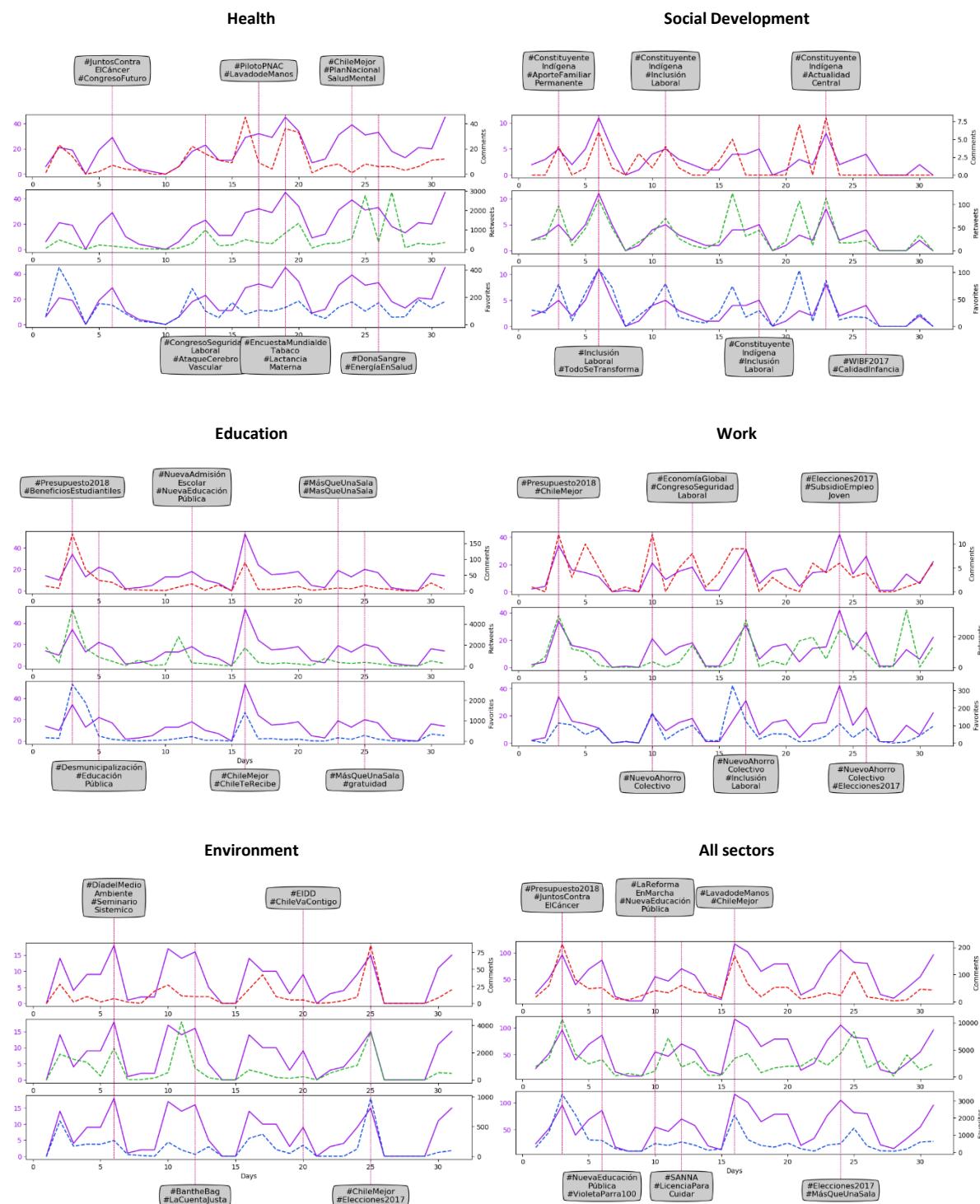


Figure S23: Annotated line charts showing correlation between announcements in Chile made in each sector and citizens comments, retweets and favorites.

## Official announcements and Citizen interaction – Uruguay

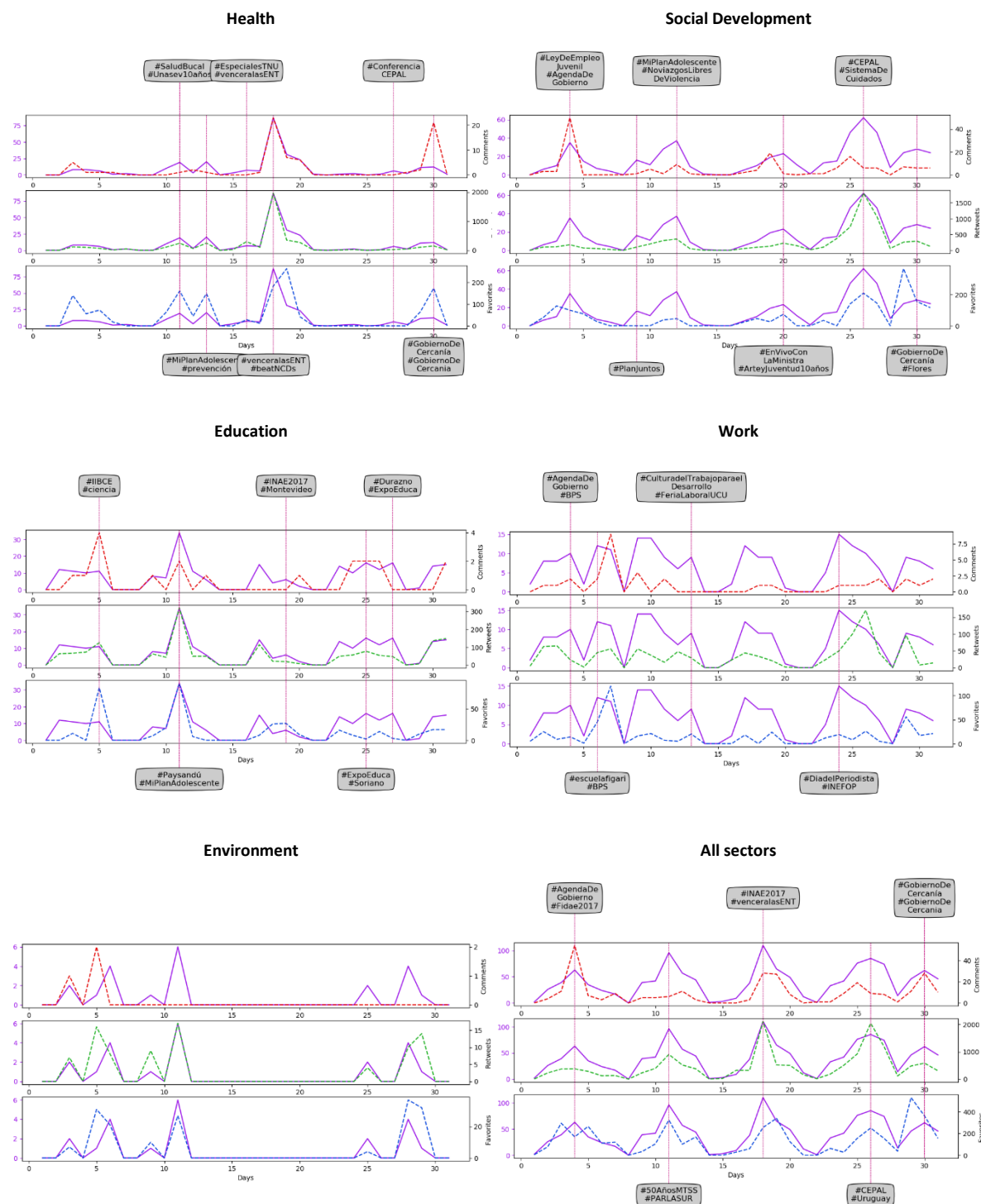


Figure S24: Annotated line charts showing correlation between announcements in Uruguay made in each sector and citizens comments, retweets and favorites.

## Official announcements and Citizen interaction -- Argentina

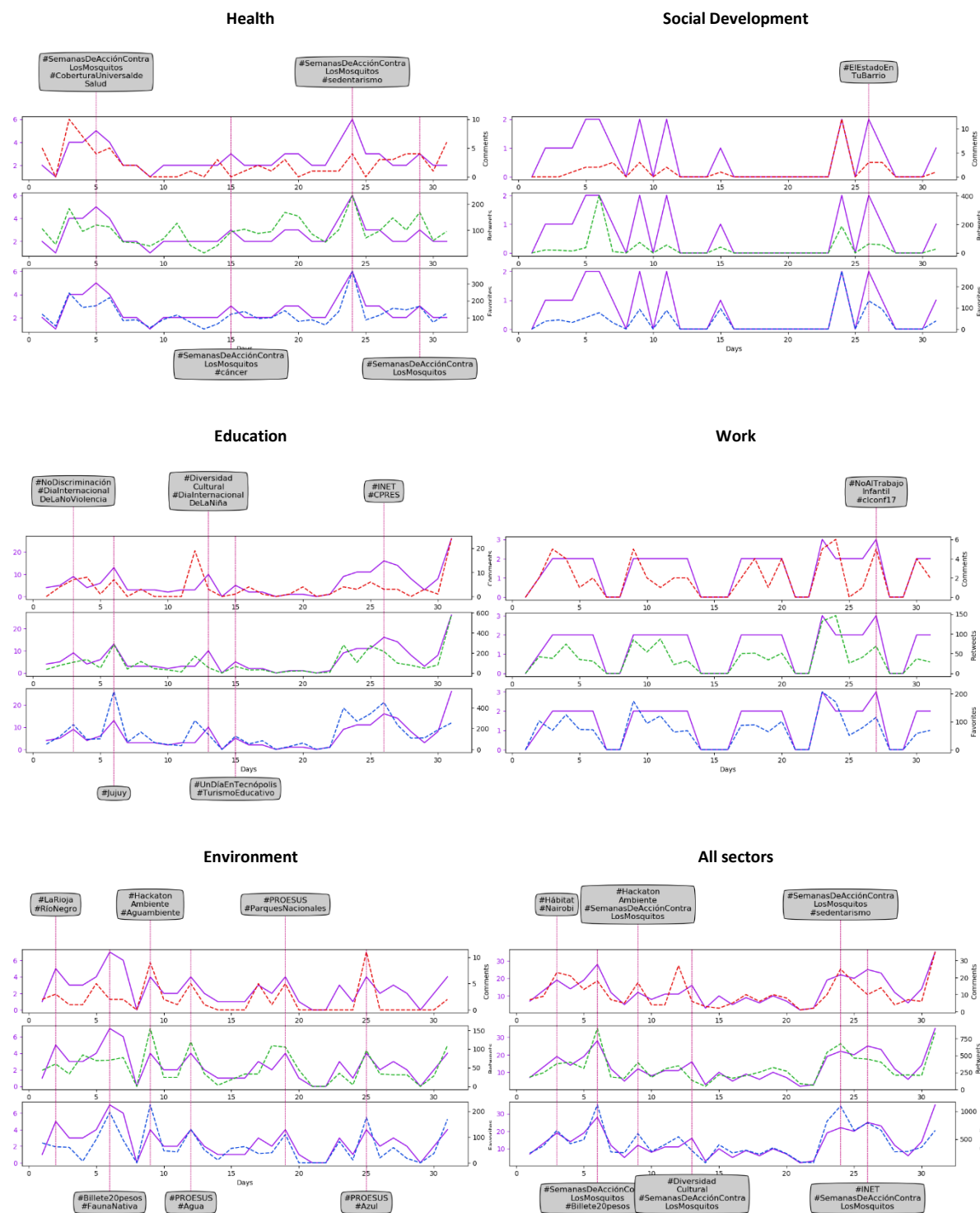


Figure S25: Annotated line charts showing correlation between announcements in Argentina made in each sector and citizens comments, retweets and favorites.



## CORRELATION BAR CHARTS

### Values of correlation for Mexico

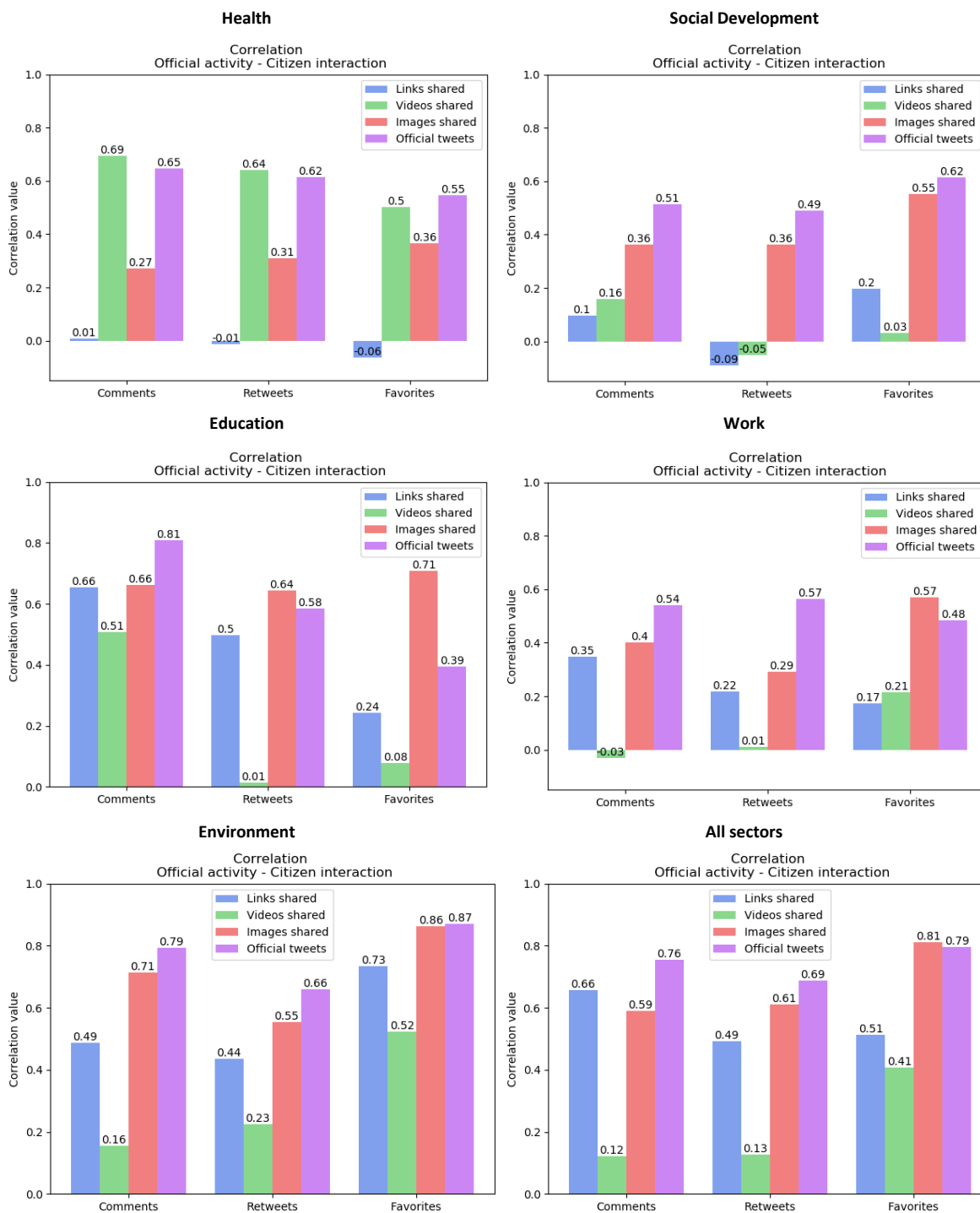


Figure S26: Bar charts showing correlation values between links, videos, images and announcements made in Mexico made in each sector and citizens comments, retweets and favorites.

## Values of correlation for Colombia

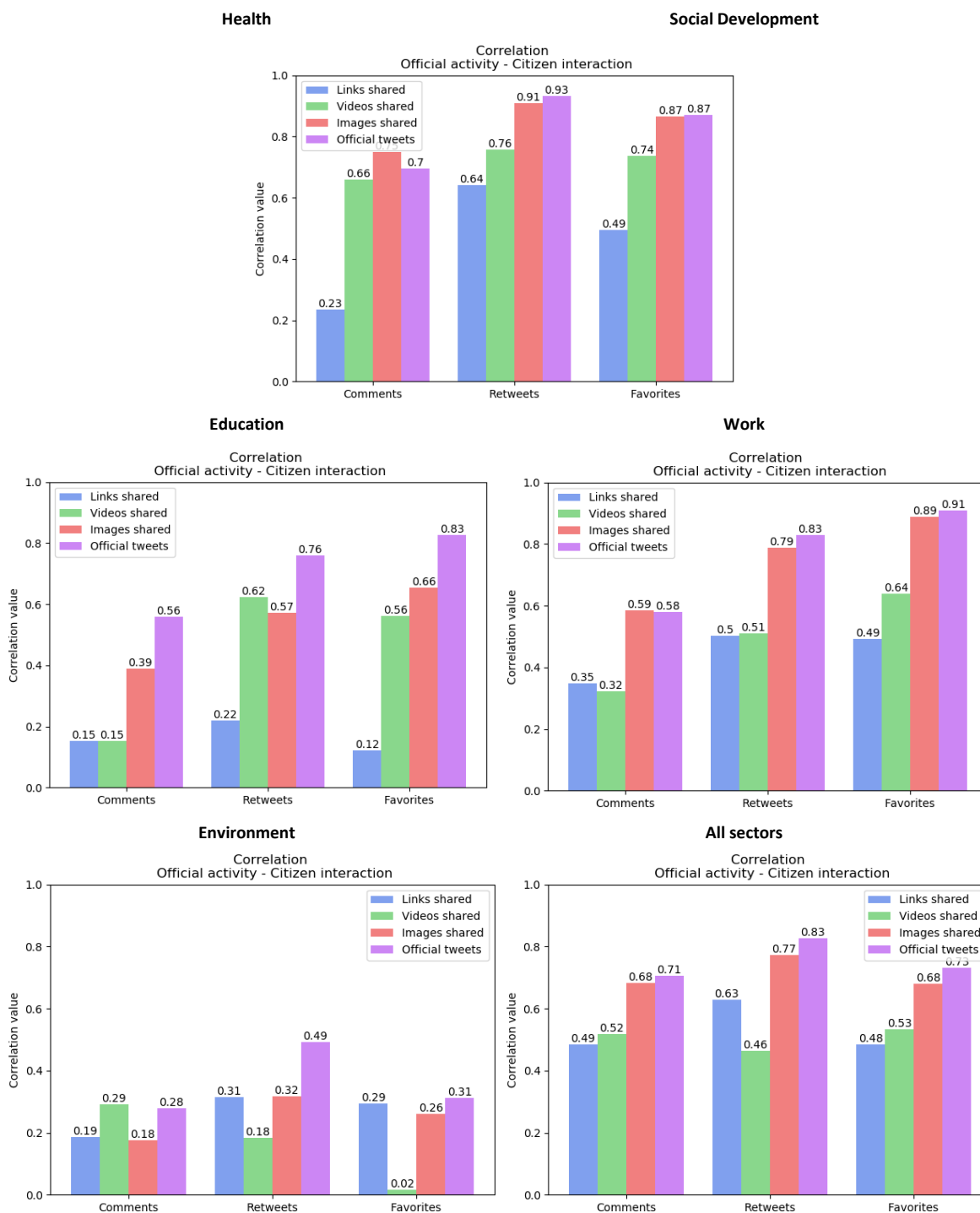


Figure S27: Bar charts showing correlation values between links, videos, images and announcements made in Colombia made in each sector and citizens comments, retweets and favorites.

## Values of correlation for Chile

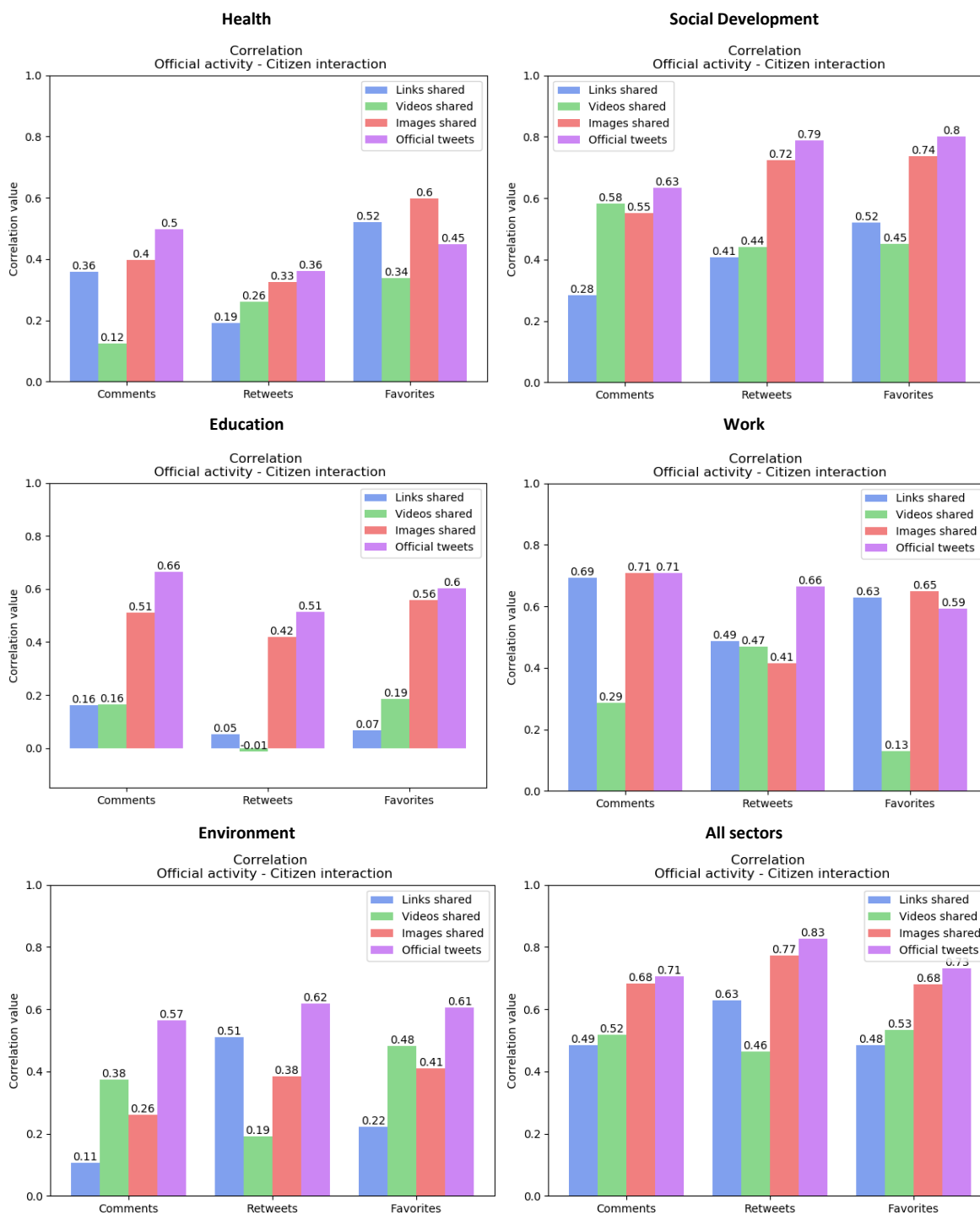


Figure S28: Bar charts showing correlation values between links, videos, images and announcements made in Chile made in each sector and citizens comments, retweets and favorites.

## Values of correlation for Uruguay

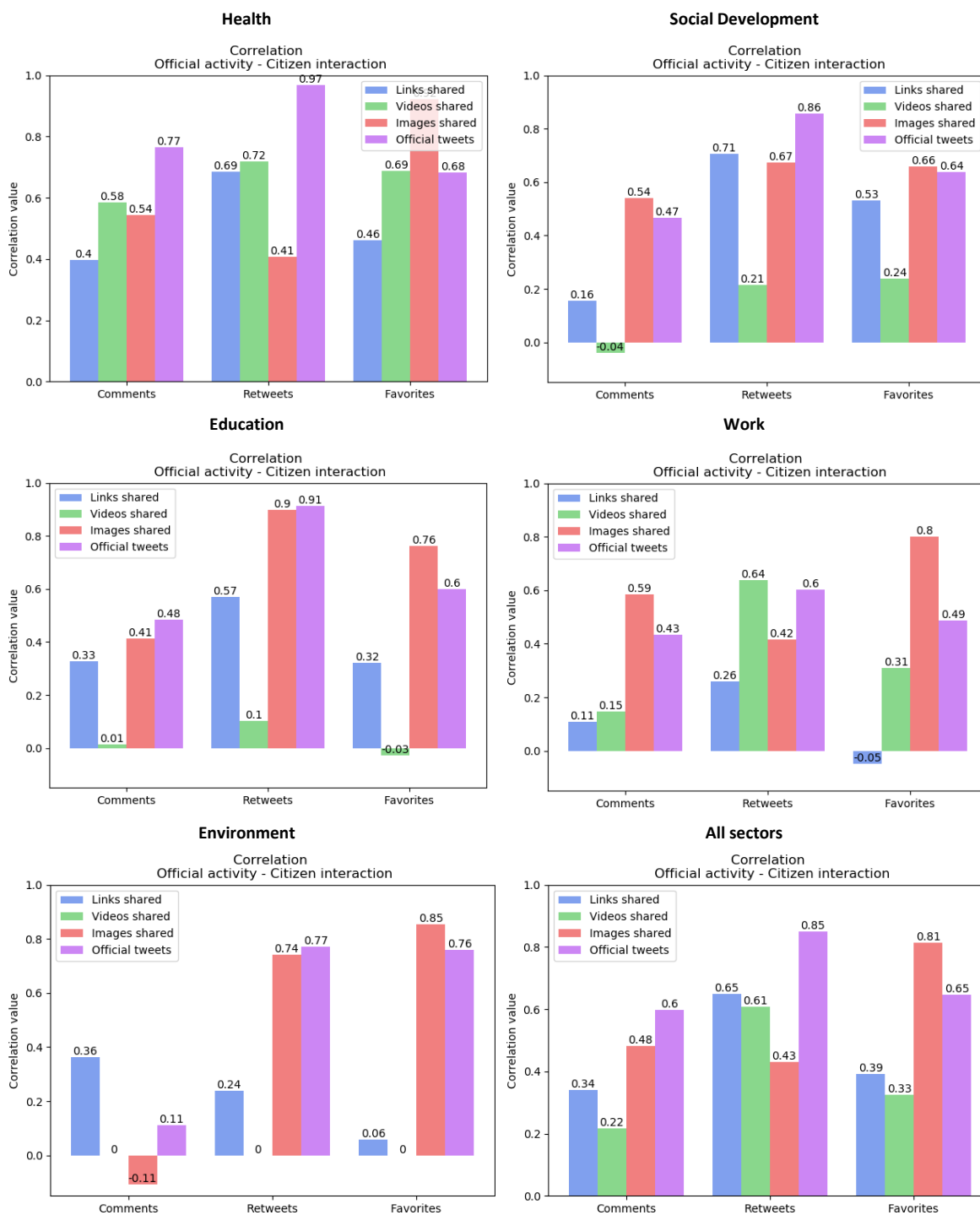


Figure S29: Bar charts showing correlation values between links, videos, images and announcements made in Uruguay made in each sector and citizens comments, retweets and favorites.

## Values of correlation for Argentina

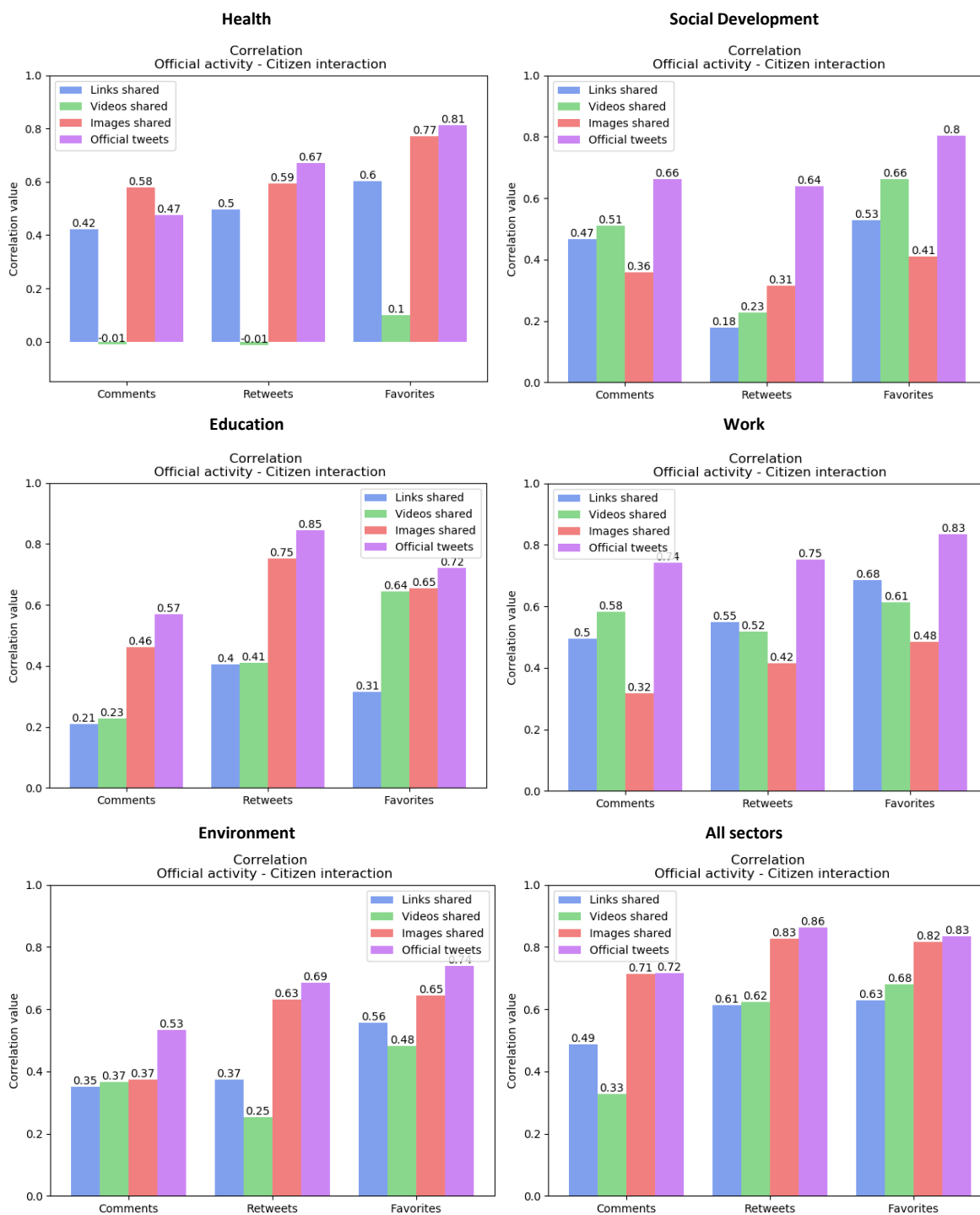


Figure S30: Bar charts showing correlation values between links, videos, images and announcements made in Argentina in each sector and citizens comments, retweets and favorites.